

# Environment Policy-2022

## I. Purpose:

NTPC being the country's largest power generator, with its presence across the energy value chain, recognizes that protection of environment is essential for sustainable business.

In the context of this Policy, the definition of Environment covers all the domains of environment - physical, chemical, biological and socio- economic aspect.

NTPC hereby adopts Environment Policy-2021, superseding its earlier policy document of 2017.

The intent of this policy is to meet environmental expectations and provide actionable guidance, as NTPC strives to foster a culture of excellence and challenges itself for continual improvement.

## II. Policy Statement:

“To provide cleaner energy by committing to the highest possible levels of performance in environmental compliance, practices and stewardship.”

## III. Applicability:

This policy shall apply to all establishments of NTPC and each employee shall be made a partner in implementing the policy.

## IV. Principles:

This policy is based on the following principles:

1. Consideration of Environmental factors right from the stage of planning, design and operation of project/station to ensure that mandatory principles of conservation and sustainability are adhered to.

### *This document contains:*

- I. Purpose*
- II. Policy Statement*
- III. Applicability*
- IV. Principles*
- V. Institutional Framework*
- VI. Policy*
  - *Stewardship*
  - *Compliance & Assurance*
  - *Stakeholder Engagement*
  - *Capacity Building*
- VII. Review*



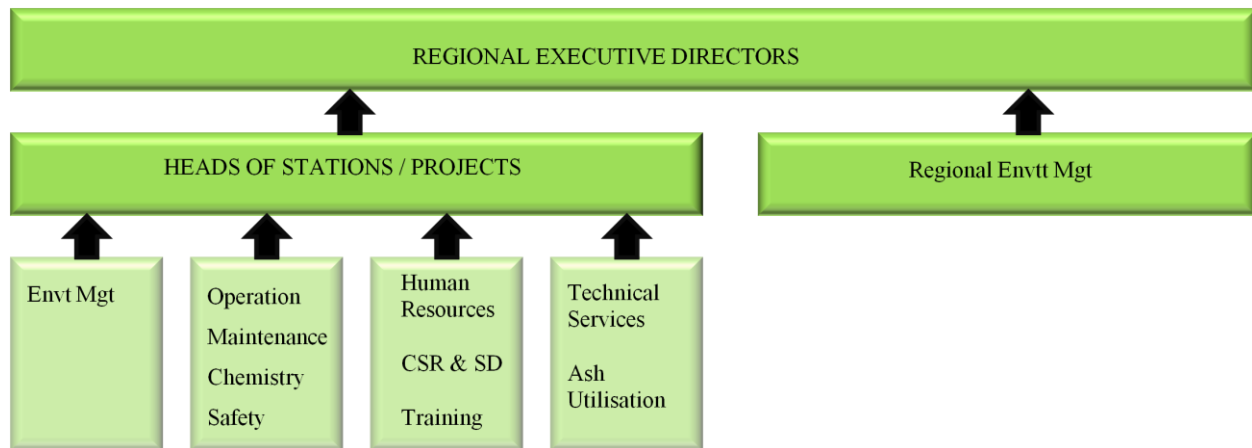
2. Adopting the best possible environment management practices and state-of-the-art technology to minimize impact of business on Environment.
3. Adopting the latest, relevant and feasible Environmental Management Systems (EMS) at all operating stations to improve our environmental performance through more efficient use of resources and reduction of waste.
4. To commit as a responsible corporate citizen by striving to achieve and set benchmarks not limited to statutory compliances.
5. Innovation by carrying out Research & Developmental activities, coupled with enablers leading to continual improvement.
6. Accepting accountability for all operations and expeditiously respond to any aberration.
7. Continuous monitoring and sharing of environmental indicators with stakeholders.
8. Develop each employee as an Environmental Steward by improving his/her awareness levels while soliciting their commitment.

**V. Institutional Framework:**

Our three tier structure for environmental systems implementation is presented below:

1. Corporate Level Functions - Engineering, planning and monitoring
2. Regional Level Functions – Compliance monitoring, Facilitators to stations and Coordination between Stations & Corporate.
3. Stations: Functions - Execution and reporting





Note: These charts do not reflect the organizational structure/reporting arrangement, but serve to identify responsible departments within NTPC.

## VI. Policy:

NTPC shall achieve these objectives by:

### 1. Stewardship:

NTPC shall:

- a. Adopt a pro-active approach and place environmental aspects as one of the prime consideration in decision-making process.
- b. Identify and manage environmental impacts due to business activities by adopting the latest environment management technologies and practices.
- c. Act to manage risks, as identified by the Risk Management Committee (RMC)\*.
- d. Evaluate performance of our environment protection equipment, programs and practices with respect to legal provisions and prepare action plans for concerned functional groups.
- e. Ensure efficient and optimal use of resources such as land, water, fuel, construction materials, oils, and chemicals etc, especially the non-renewable ones.
- f. Spearhead waste management by adopting the 3Rs principle (Reduce, Re-use and Recycle) and safe disposal.
- g. Adopt more environment friendly and energy-efficient inputs.



- h. Provide innovative technological solutions to environment related issues.
- i. Benchmark parameters to establish and adopt best practices.
- j. Take up environmentally befitting projects in areas of climate change, renewable energy, conservation and responsible consumption of natural resources under Sustainable Development initiatives.
- k. Adopt principles of green procurement by incorporating appropriate provisions in contracts and procurements.
- l. To formulate and adopt separate Policies for Ash utilisation, Rehabilitation & Resettlement, Community Development – Corporate Social Responsibility and Sustainable Development.
- m. Creation of carbon sink by adding green cover in and around NTPC stations.

\*RMC comprises of members from senior functionaries of management as per provisions of Companies Act 2016.

## 2. Compliance and Assurance:

- a. NTPC shall continue to comply with all relevant environmental regulations, standards and other codes of practice, by operating and maintaining the assets within the boundary of permits, consents, and licenses.
- b. The RMC shall establish systems for reporting environment related parameters, deviations and constraints to management of risks. Potential environmental risks shall be reviewed through a risk management mechanism for appropriate action.
- c. The concerned departments shall oversee compliance assurance of operating stations through reviews and appraisals.
- d. Requirement stipulated in all obtained clearances shall be complied with, including in new establishments and expansions.

## 3. Stakeholder Engagement:

NTPC shall continue to identify all stakeholders and engage with them at appropriate levels, to exchange views on environmental concerns and mitigation measures thereof.



#### **4. Capacity Building:**

- a. NTPC shall ensure all employees are made environmentally aware to enable them to integrate its principles into their activities and decisions by participating in suitable trainings/skill development programmes.
- b. The Environment Management Group shall come up with focused requirements (including skill training and culture building), clearly bringing out the desired objectives, audience and responsibility.

#### **VII. Review:**

This policy shall be reviewed at opportune time, but not later than once in three years.

