

ESG at NTPC

Catalysing Transition towards Integrated and Sustainable Business

Discussion Outline



NTPC Overview

Operational Footprint

1

NTPC's Energy Transition

Avenues

2

NTPC ESG Strategy

MS, Targets

3

Environment Performance

Initiatives & Trends

4

Social Performance

Initiatives & Trends

5



NTPC Overview



1

NTPC: Vision, Mission and Core Values



Vision

To be the World's
Leading Power Company,
accelerating India's growth and energy transition

Mission

Provide Reliable Power and energy transition
Solutions in an Economical, Efficient and
Environment friendly manner, driven by
Innovation and Agility

Core Values

Integrity

Customer Focus
& Agility

Organisational
Pride

Mutual Respect
and Trust

Innovation and
Learning

Total Quality
and Safety



I



C



O



M



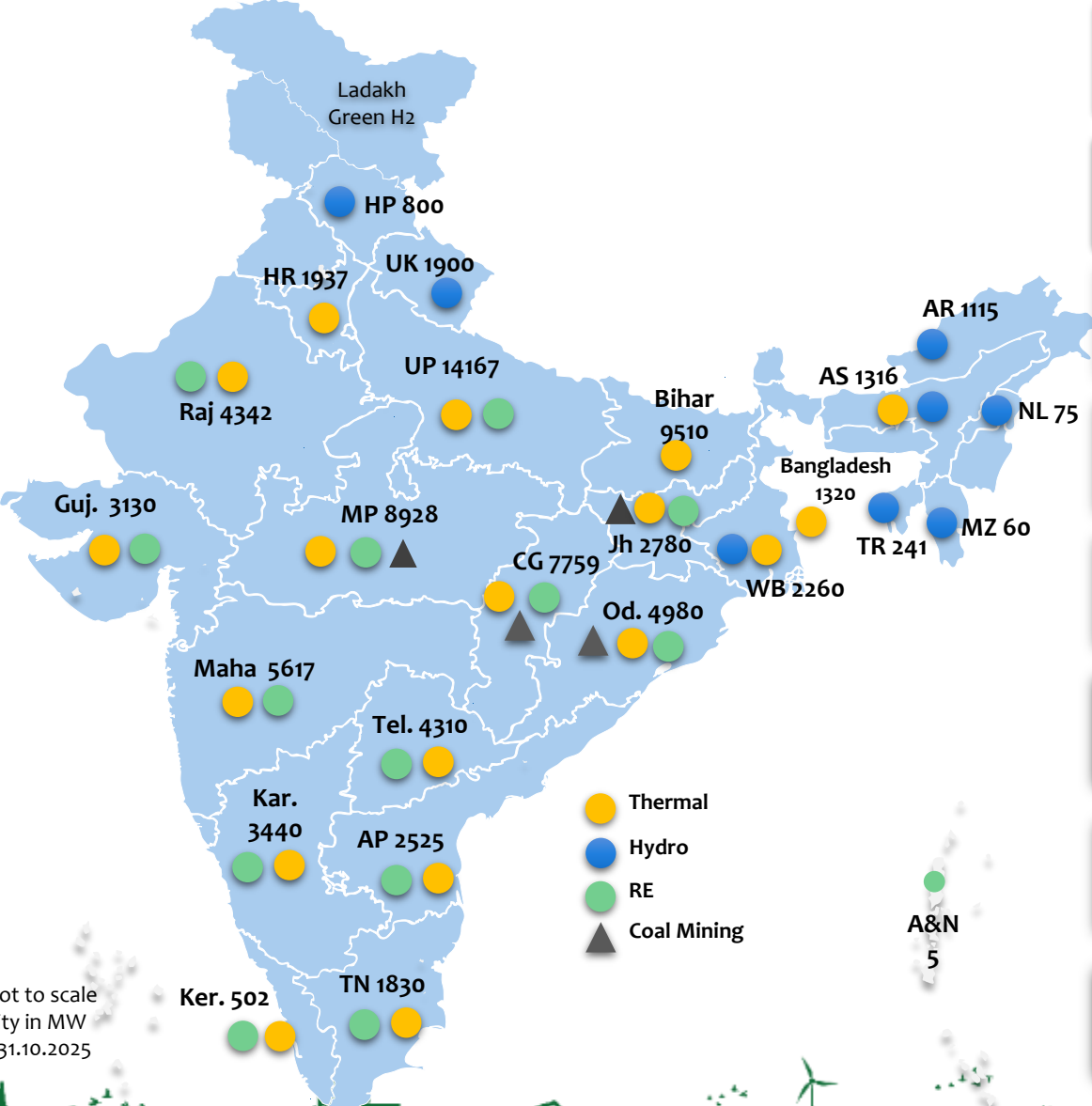
I



T



NTPC Group Profile



117 GW

Portfolio of Thermal , Hydro & Renewable Assets

84.05 GW

Capacity under Operation

32.5 GW

Capacity under Construction

8.92 GW

Renewable Capacity under Operation
13.8 GW under construction

~45 MMTPA

Coal Mining Capacity
[6 Mines Operational + 3 Under Development]

27
Companies

11 Subsidiaries
16 Joint Ventures

Pan India
Customers

Supplying Power to beneficiaries in all States & UTs

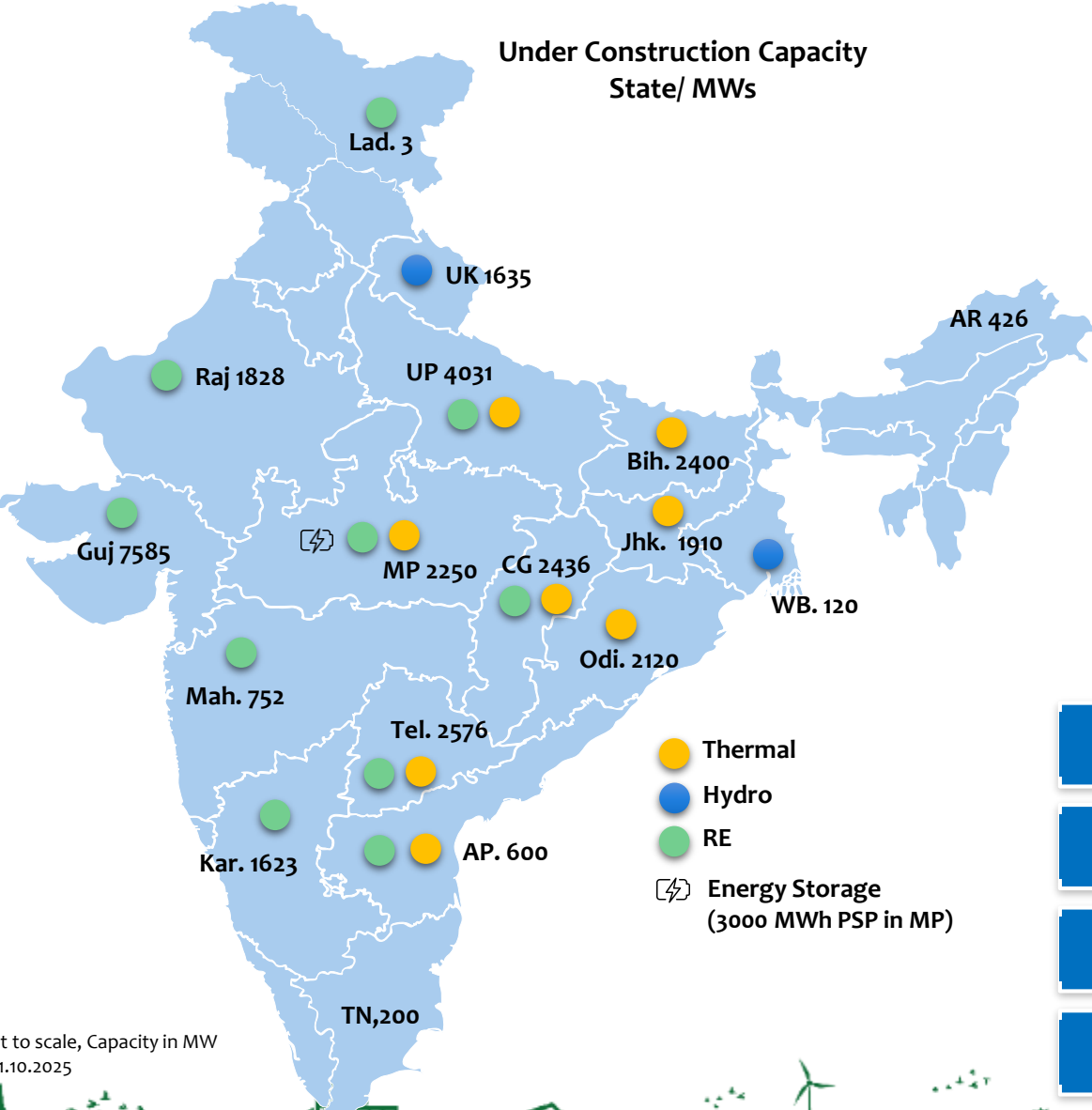
17,000+

Employees

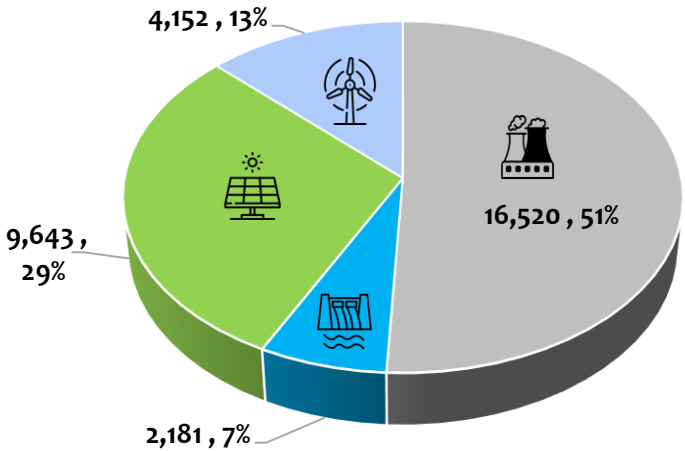
Under Construction Projects: 32,495 MW



Under Construction Capacity
State/ MWs



NTPC Under Construction Capacity (MW , %)



16.52 GW

Super Critical /Ultra Super Critical under Construction

~48.5 GW

FGD Under Construction

8.8 GW

With Air Cooled Condenser

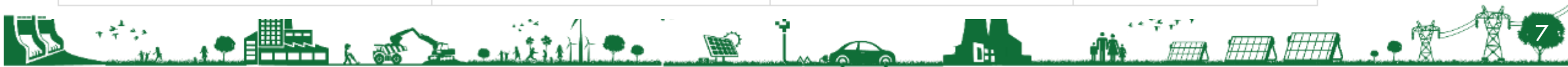
13.8 GW

RE capacity under construction

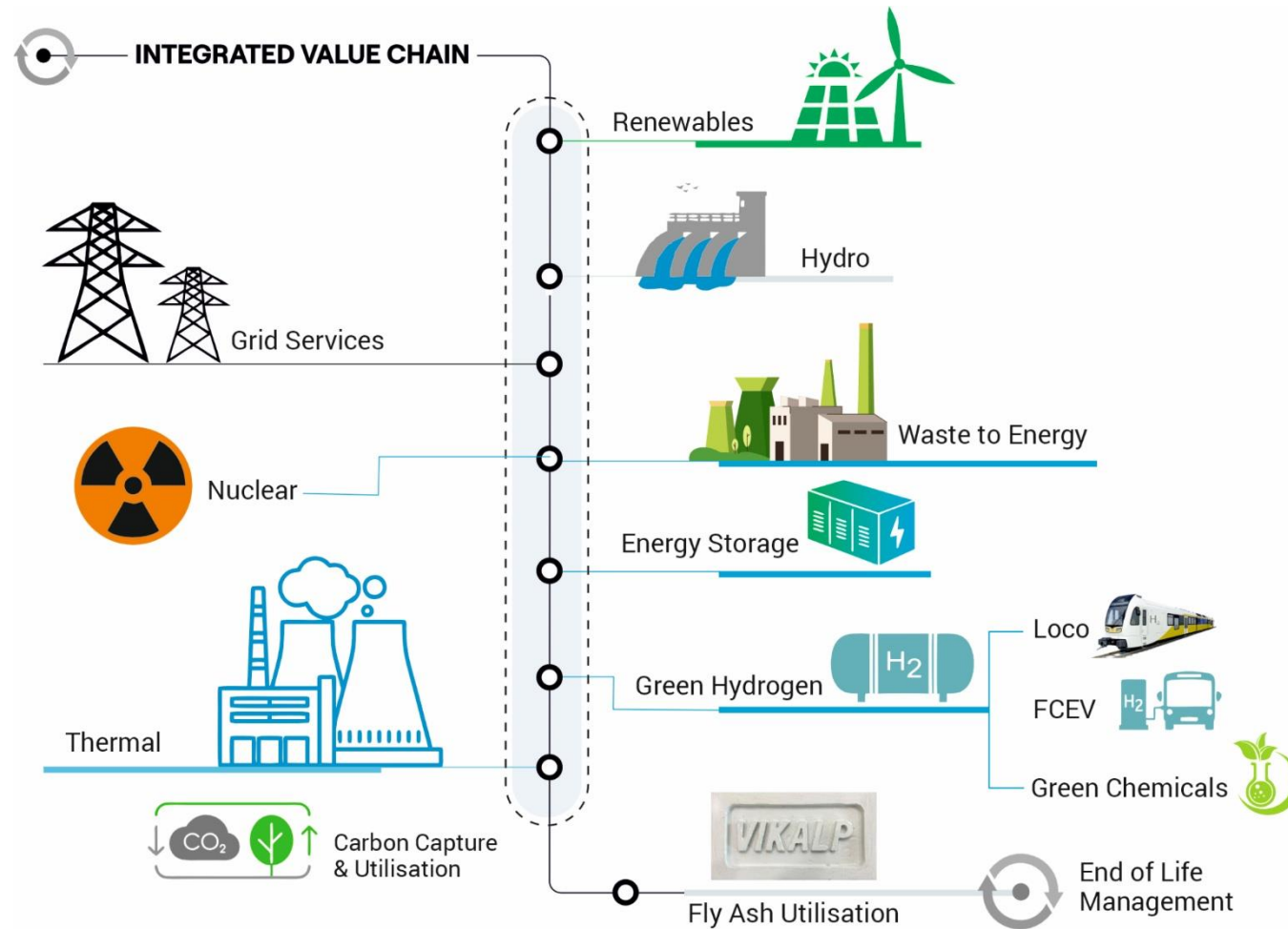
Map not to scale, Capacity in MW
As on 31.10.2025

- NTPC to be a 149GW + 1GW Pump hydro storage company by 2032 with diversified fuel mix and a 600 BU company in terms of generation.
- Coal would continue as predominant fuel with 65% share of coal based capacity in the portfolio.
- Non-fossil fuel based capacity would achieve a share of 30% and Thermal based generating capacity share would be 70%.
- Share of RE (including hydro) would be 28%
- NTPC targets a market share of 25% in ancillary services and storage
- NTPC aims to achieve 10% of the estimated market share for supply of electricity in E-mobility business

in GW	Dec 2026	By 2032	% Mix
Thermal	74	83.6	56.11
Hydro	4	4.7	3.15
Renewables	21	60	40.27
Nuclear	0	0.7	0.47
Total	99	149	100
PSP	1	1	
BESS (GWh)	2	22	



NTPC's Energy Transition



Future Scenario: Building a Sustainable and Secure Future

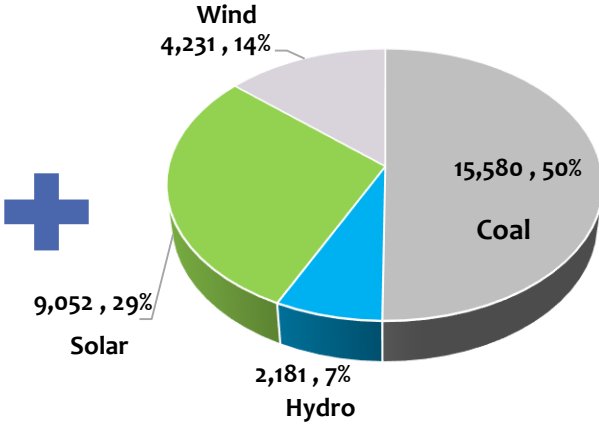
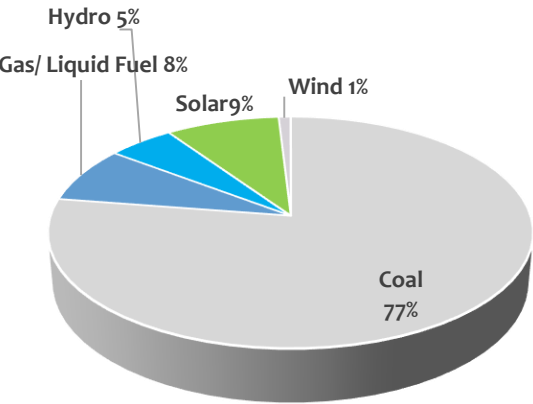


Present Capacity
GW



Under Construction
GW

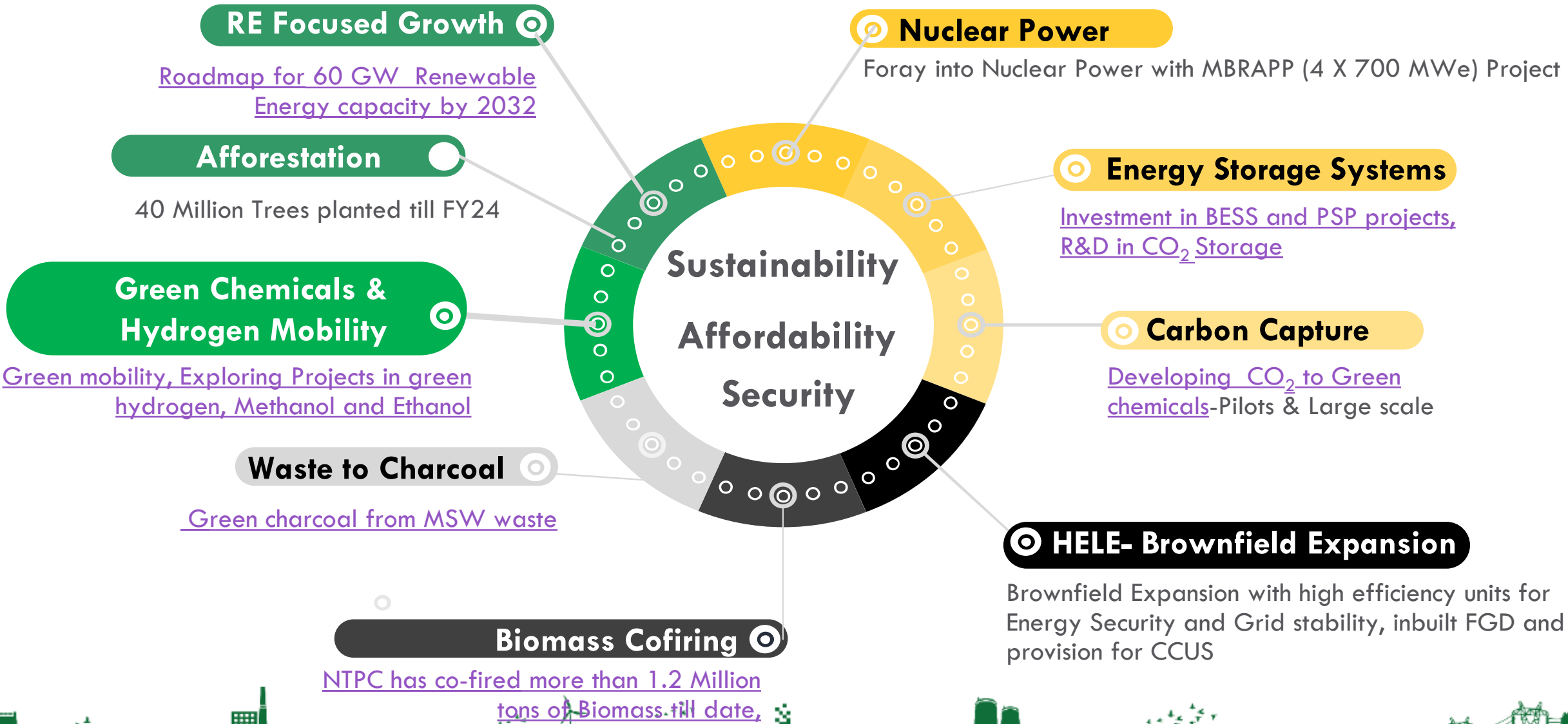
Diversifying Value chain.....
Providing Integrated Energy Solutions



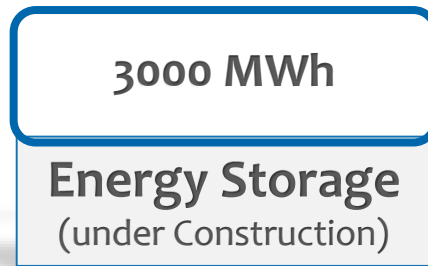
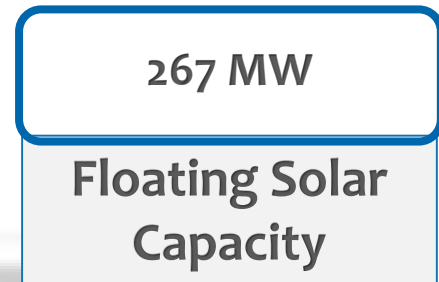
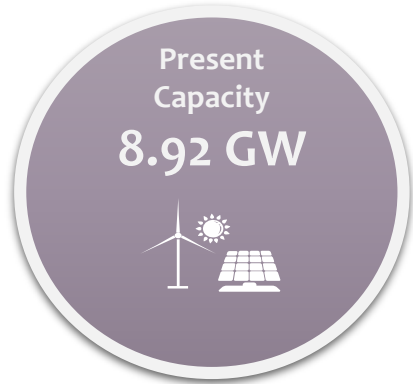
Current Non-Fossil Portfolio of 27.234 GW



NTPC's Plan for orderly Energy transition



Focus on RE



Focussed and accelerated RE capacity addition through NGEL

40 GW	Bid Based	TBCB: 25 GW CPSU: 5 GW Flexibilization: 10 GW
15 GW	Bilateral Merchant	C&I: 10 GW (incl. ESS) Merchant: 5 GW
5 GW	Green Hydrogen	Energy Storage Mobility Green Chemicals

Pump Storage Projects

11550 MW - 9 PSPs Indicated to NTPC by MoP

- Allocated Capacity: 4000 MW-4 PSPs:**
 - 1000 MW Upper Bhavani, Tamil Nadu;
 - 800MW Amba, Maharashtra;
 - 1000 MW Kumbhe, Maharashtra
 - 1200 MW Sikaser, Chattisgarh
- THDC : 500 MW** under Construction, MoUs signed for **10 PSPs of 11,740 MW**
- NEEPCO: 2620 MW**, 3 PSPs identified

Foray into Nuclear Power



ASHVINI- Anu Shakti Vidhyut Nigam Limited : A JVC of NPCIL & NTPC (51:49) respectively



Govt approved ASHVINI to build, own, and operate nuclear power plants on 13th Sep '24.



Hon'ble PM laid the foundation stone of MBRAPP on 25th Sep '25



Equity infusion of INR 700.00 Crs to JVC approved by NTPC board.



Joint team of NTPC and NPCIL is working together at MBRAPP site.

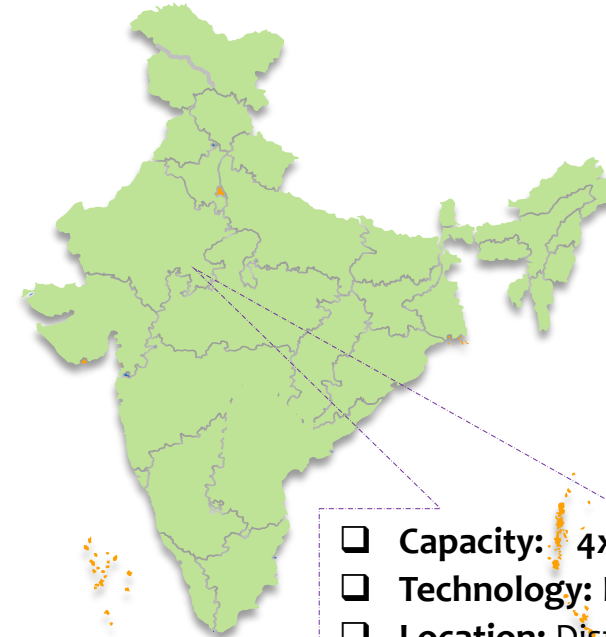


AERB transferred Consent for Siting from NPCIL to ASHVINI



JVC intended to take benefit of both NPCIL's technical expertise & NTPC's large & complex project handling capacity.

Mahi Banswara Rajasthan Atomic Power Plant (MBRAPP)



- ❑ **Capacity:** 4x700 Mwe
- ❑ **Technology:** Indian PHWR
- ❑ **Location:** Dist.- Banswara, Rajasthan
- ❑ **Nearest Airport:** Udaipur-180KM,
- ❑ **Nearest Railway station:** Ratlam-60KM



Pumped Storage Project (PSP)

- ✓ NTPC Group is strategically positioned with an impressive 21240 MW pumped storage portfolio - 10200 MW under NTPC and 11040 MW via THDC and NEEPCO.
- ✓ COD for 2 PSP Units of 250 MW each of THDC (TEHRI PSP U#1 and U#2) declared on 7 June 2025 and 10 July 2025 respectively. We will see another 500 MW commissioned through Tehri PSP in current fiscal.
- ✓ Another 3 - 5 GW of PSP expected to be commissioned by 2031-32. Allocation done for 4800 MW of projects to NTPC as follows:

SL no	Name of Project	Capacity
1	Upper Bhavani PSP (TN)	1000 MW
2	Amba PSP (MH)	800 MW
3	Kumbhe PSP (MH)	1000 MW
4	Sikaser PSP (CG)	1200 MW
5	Matiyari PSP (MP)	800 MW
	Total	4800 MW

- ✓ Completed Preliminary Feasibility Reports for 18 projects and Detailed Project Reports for 4 projects are in an advanced stage.



- a. NTPC, through its trading arm NVVN, has been nominated by Ministry of Power as the BESS Implementing Agency for rolling out BESS projects under the Government's viability gap funding (VGF) scheme. NVVN has issued a tender for establishment of 500 MW/1000 MWh standalone BESS across India with VGF support under Market component, while it has floated two tenders – one for procuring 250 MW/1000 MWh standalone BESS in the state of Uttar Pradesh, with VGF support and a greenshoe option for an additional 250 MW /1000 MWh capacity, and other for procuring 500 MW/1000 MWh STU-connected standalone BESS in Rajasthan, also with VGF support.
- b. NTPC's subsidiary THDC has commissioned two units of 250MW each of pumped storage project (PSP) in Tehri as on 31.07.2025 and remaining two units of 250MW each are expected to be commissioned in this year.
- c. The company is working on pipeline of PSP to the tune of 20 GW, with Detailed Project Reports for 4 projects in an advanced stage and upto 5GW PSP targeted for commissioning by 2032.
- d. NTPC is also developing hydrogen energy storage solutions for remote regions, including a 200-kW round-the-clock (RTC) power supply project at Chushul, Ladakh for Indian Army.
- e. NTPC has deployed a 500-kW solar-based off-grid power system integrated with a 250 kW/1200 kWh BESS at Khavda to provide construction power removing need for DG sets.

22 GWh BESS by 2032



Carbon Capture & Utilisation-Pilot Projects

1. Flue Gas CO₂ to Methanol Plant at NTPC Vindhyachal

- World's First CO₂ to Methanol Plant has been commissioned at NTPC Vindhyachal
- It has carbon capture capacity of ~6000 TPA to produce ~3000 TPA of green methanol using first indigenous methanol synthesis catalyst.
- Captured CO₂ is converted into Methanol using Green Hydrogen

2. CO₂ to Sustainable Aviation Fuel (SAF) Plant at NTPC Pudimadaka

- Production Capacity of 1800 TPA; capturing 4200 TPA of CO₂
- Potential for a Carbon-Neutral Fuel Cycle
- Energy security and diversification for sustainable aviation fuel
- Potential for Economic Benefit



Pipeline for compression and transportation of flue gas CO₂ from NTPC Simhadri to Pudimadaka, which can enable large-scale movement of CO₂ and development of CCU/CCS hubs.

3. Detailed geological studies at Pakri Barwadih mines along with drilling of CO₂ Injection Bore which can explore the viability of storing CO₂ in coal seams.



Green H2 Initiatives

Green H2Hub, Pudimadaka - Overview



Project Location : Pudimadaka, Visakhapatnam, AP
Power Supply : 7 GW RE-RTC through CTU Open access
Planned Infrastructure :

- Green Hydrogen: 1500 TPD (300 TPD Liquid Hydrogen)
- Green Ammonia: 4500 TPD
- Green Methanol: 1500 TPD
- Sustainable Aviation Fuel (SAF) : 600 TPD
- Green Urea: 1350 TPD
- 300 Acres for common infra and Green Belt
- 600 Acres for Green Chemicals

*Sustainable Aviation Fuel

Other Initiatives



Mobility @ Leh and Delhi NCR
10 buses, 2 Filling stations



Tie-up for Electrolysers
400 MW PEM | 600 MW Alkaline



CO2 to Methanol @ Vindhyachal

- CO2 Capture Plant (20 TPD)
- Methanol Synthesis & Distillation Plant (10 TPD)



Hydrogen-PNG Blending @ Kawas
8% by volume, 0.7 TPA H2



Biomass Co-firing with Coal: Avoiding Fossil GHG Emissions

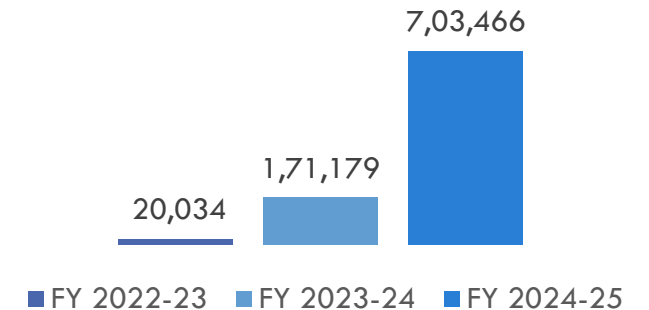


Crop residue (paddy straw) burning in Punjab & Haryana cause air pollution and heavy smog in NCR.



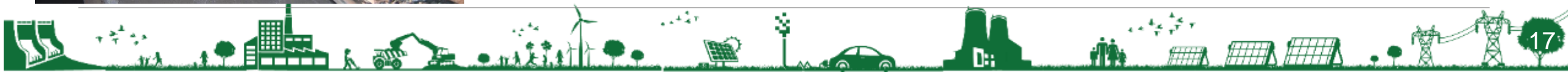
- NTPC consumed 703,466.12 MT of Biomass in FY 2024-25.
- Total Qty of 7.48 Mn MT ordered across 22 NTPC stations and one JV (APCPL Jhajjar)

Biomass Co-Fired



Biomass Procurement Short - Term Contracts

- Short-term contracts have been awarded to source biomass for 14 plants across NCR, Northern, and Western regions, totalling 6,384 TPD (2.22 MMT) of non-torrefied pellets from 265 vendors.
- Supplies have commenced at key stations in Western (Mouda, Gadarwara, Khargone, Solapur, Sipat, Korba, Lara), Northern (Vindhyachal), and NCR (Dadri, APCPL-Jhajjar) regions.
- For APCPL Jhajjar, 1,060 TPD (386,900 MT) of biomass has been awarded to 47 vendors, and supply is underway.



Waste to Energy Projects

- NTPC has signed a Land Use and MSW Agreement with Meerut Nagar Nigam for the processing of 900 TPD of MSW into green charcoal.
- An MoU was the Municipal Corporations of Gurgaon and Faridabad for developing similar MSW-to-charcoal projects, which will be implemented by APCPL Jhajjar



Waste to Compost

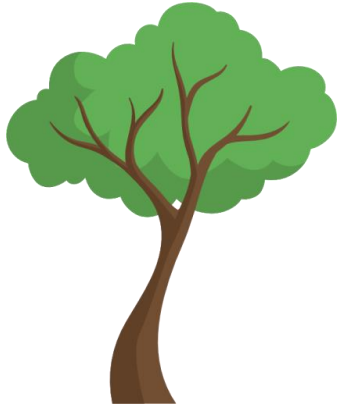
- NTPC revamped and managing O&M of Waste to Compost plant at Varanasi having 600 TPD Capacity. It generates 60-80 TPD of compost.

Waste to Charcoal Projects

- Dadri Pilot project for MSW to charcoal plant already commissioned.
- Varanasi Harit Koyala Pariyojana has been commissioned with 600 TPD MSW capacity. It is based on Torrefaction Technology
- Other MSW to Charcoal Plants are under planning & implementation at Gorakhpur (500 TPD), Hubli-Dharwad (200 TPD), Noida (900 TPD) and Bhopal (400 TPD).



Creating Carbon Sinks through Afforestation



- Supporting country's NDC of creating an additional carbon sink of 2.5 to 3 billion tonnes of CO₂ equivalent through forest and tree cover by 2030.
- Have planted 10 million trees across the country during 2016-17 and continuing to create additional sink by planting 1 million tree each year
- More than 40 Million saplings planted till 2024-25 since inception (NTPC/Govt. Lands)

Avoiding GHG emissions through Non-Fossil Generation



- Avoiding GHG emissions through operational Non-fossil based power generation

Avoided Emissions (Million Tons)



R&D: NTPC Energy Technology Research Alliance (NETRA)



Recognition & Certification

DSIR | Boiler Board | NABL

Knowledge Networking

National (19) | International (05)

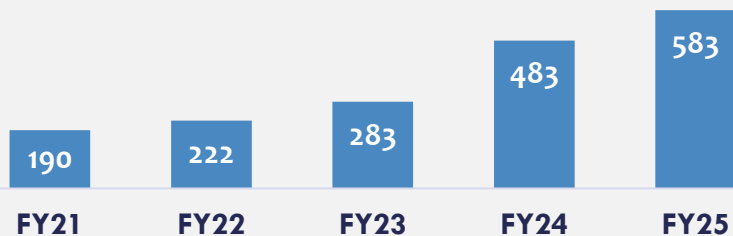
IPR - Patents

Filed (78) | Granted (55)

IPR - Copyrights

Filed (28) | Granted (25)

R&D Expenditure (Rs Cr)



CCUS
Technology



Green
Hydrogen
Technology



Energy
Storage
Technology



Ash
Technology



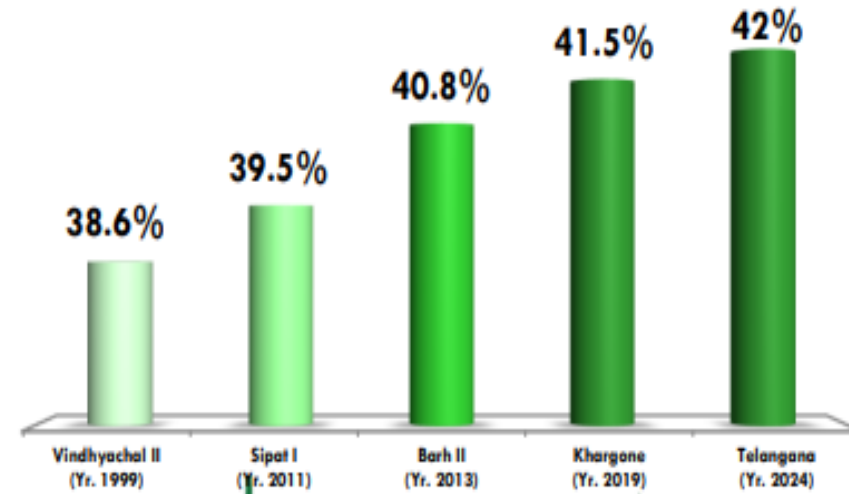
Advance
Scientific
Services



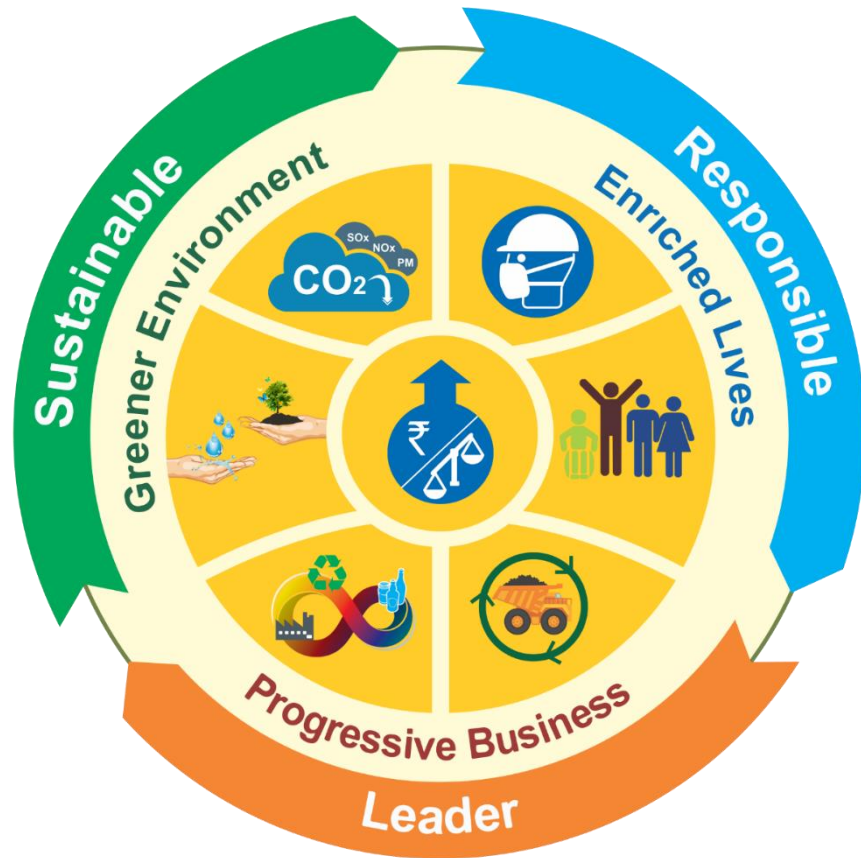
- All new coal capacity additions (15.6 GW) is based on HELE (High Efficiency Low Emissions) Technologies — Supercritical, Ultra Supercritical, Advanced Ultra Supercritical
- In FY 2024-25, NTPC attained energy savings of approximately 1,955.4 TJ



Every 1% rise in efficiency leads to 2.5% CO₂ reduction

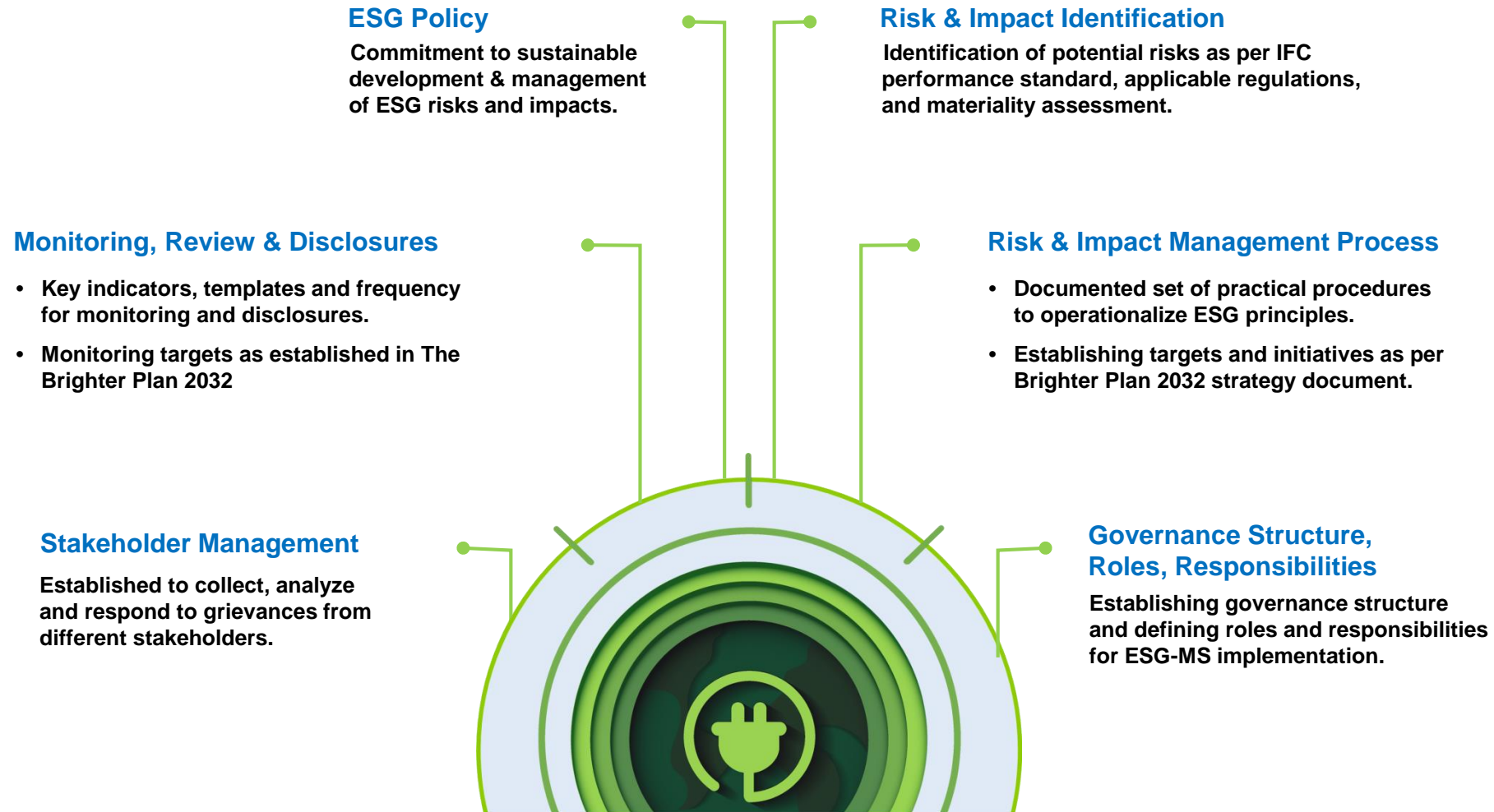


Sustainability Strategy



The Brighter Plan 2032

3



NTPC ESG-MS Components



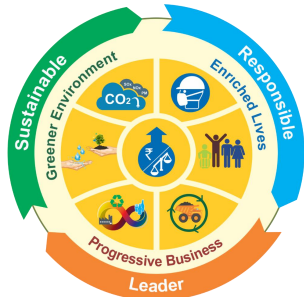
NTPC ESG-Management System



Synergized Corporate and ESG strategy



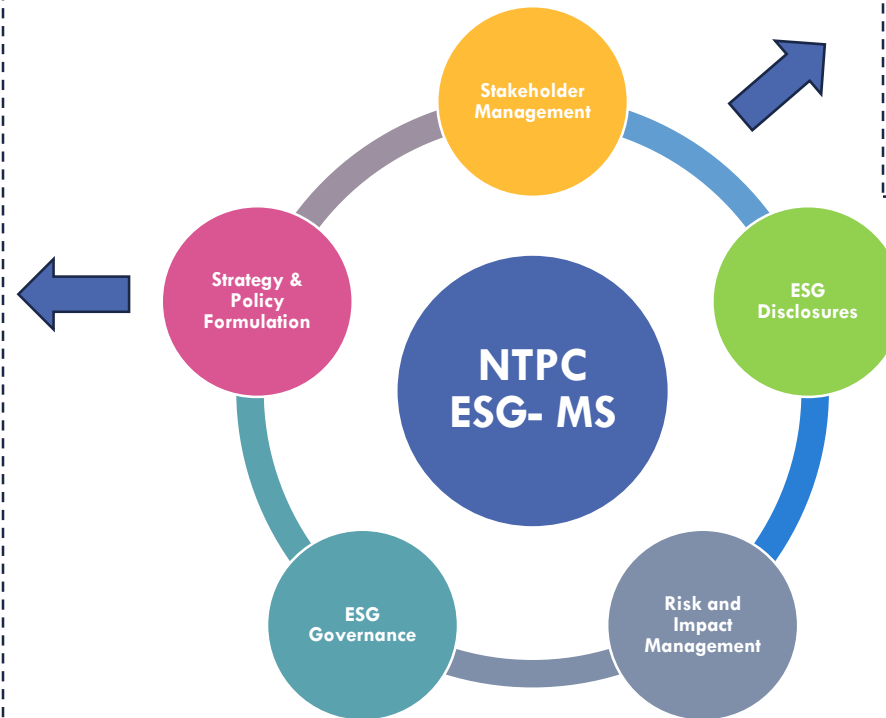
Corporate Plan



The Brighter Plan 2032

- 150 GW by 2032; 60 GW of RE
- Diversification into Green H2, CCU, WtE, Power Trading, EV

- Focus on Decarbonization, Water, Biodiversity, Circular Economy, Safety, Supply Chain, and Business Ethics
- Clearly defined targets on 26 KPIs pertaining to above



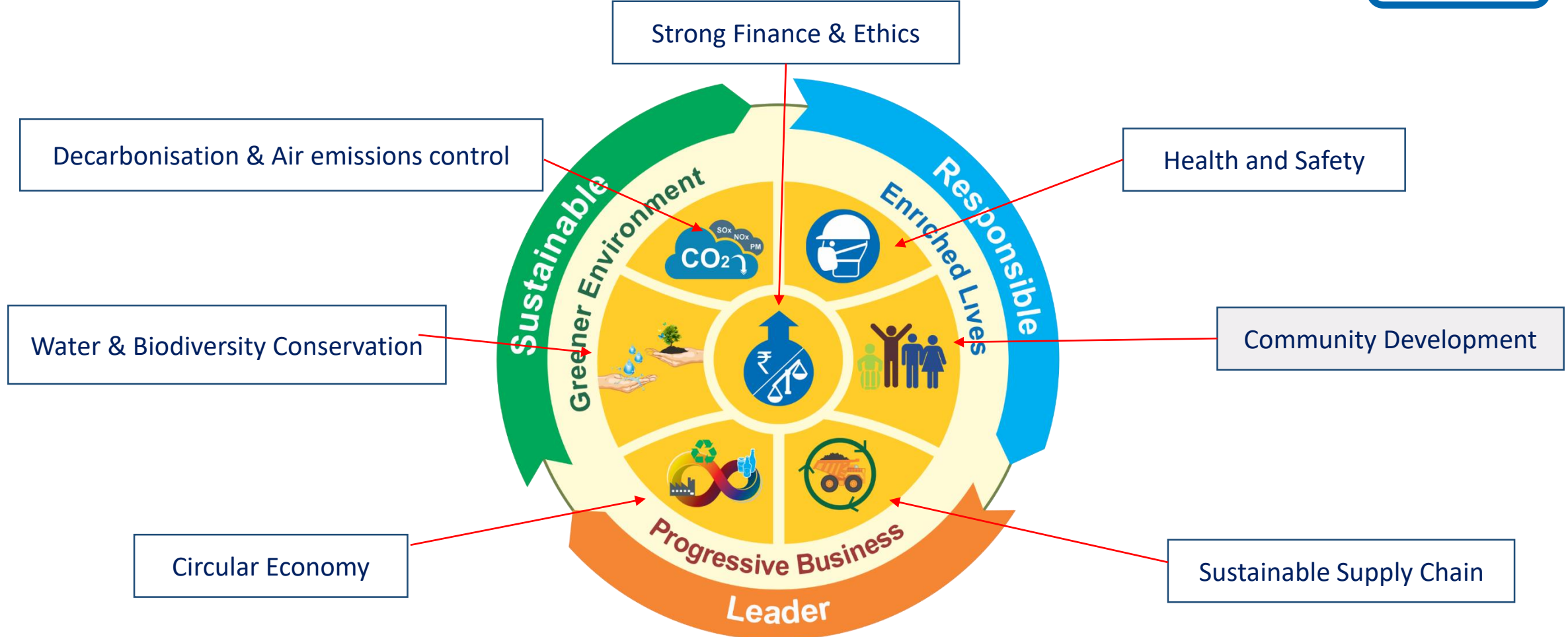
NTPC MSCI ESG Rating improved from CCC to B

"ESG Management System Framework:

A Guidebook for Sustainability Aligned with Global Standards, Enhancing Transparency and Accountability"



ESG: Target Settings



The Brighter Plan 2032

Aligned to core business strategy, 26 KPIs of 7 focus areas on Economic, Social and Environmental fronts



Environment

- Waste Management Policy 2022
- Water Policy 2022
- Rainwater Harvesting Policy 2018
- Environment Policy
- Integrated Plastic Management Policy 2019
- E-Waste Policy 2014
- Biodiversity Policy 2018
- Ash Policy 2015

Social

- Safety Policy 2022
- NTPC Diversity, Equity & Inclusion (DEI) Policy
- Service Rules 2019
- NTPC Policy for CSR 2022
- Human Rights Policy 2019
- Recruitment Policy 2020
- Promotion Policy
- Policy on HIV-AIDS at Workplace 2019
- Placement and Transfer Policy 2021
- Job Rotation Policy 2019
- Equal Opportunity Policy 2019
- Career Development and Succession Planning Policy 2019
- Training Policy For Directors

Governance

- Whistle Blower Policy
- Fraud Prevention Policy 2007
- Code of Conduct for Board Members and Senior Management Personnel
- CDA Rules 2023
- Policy for Debarment from Business Dealings
- Complaint Handling Policy
- Code for prevention of Insider Trading in the securities of NTPC
- Policy for determination of materiality of events or information for disclosure
- Policy on Materiality of Related Party Transactions and on dealing with Related Party Transactions
- Anti Bribery and Anti Corruption Policy (ABAC) Policy 2023

ESG Policy 2024



ESG: Disclosures

- ❑ Publishing Sustainability Reports Since FY'12, Now Aligned with GRI Standards 2021
- ❑ 6th Integrated Annual Report published in FY' 25 as per IR, GRI and BRSR framework
- ❑ Expanded the boundary of reporting with inclusion of all JVs & Subsidiaries since FY2020
- ❑ Proactively Instituting measurement and monitoring systems for evolving KPIs around ESG
- ❑ Timely responding to DJSI, CDP questionnaires and other queries of concerned stakeholders
- ❑ Regular follow-ups and discussions with leading ESG Analysts and rating agencies

14 years of
Sustainability
Reporting

ESG Disclosure



ESG Profile



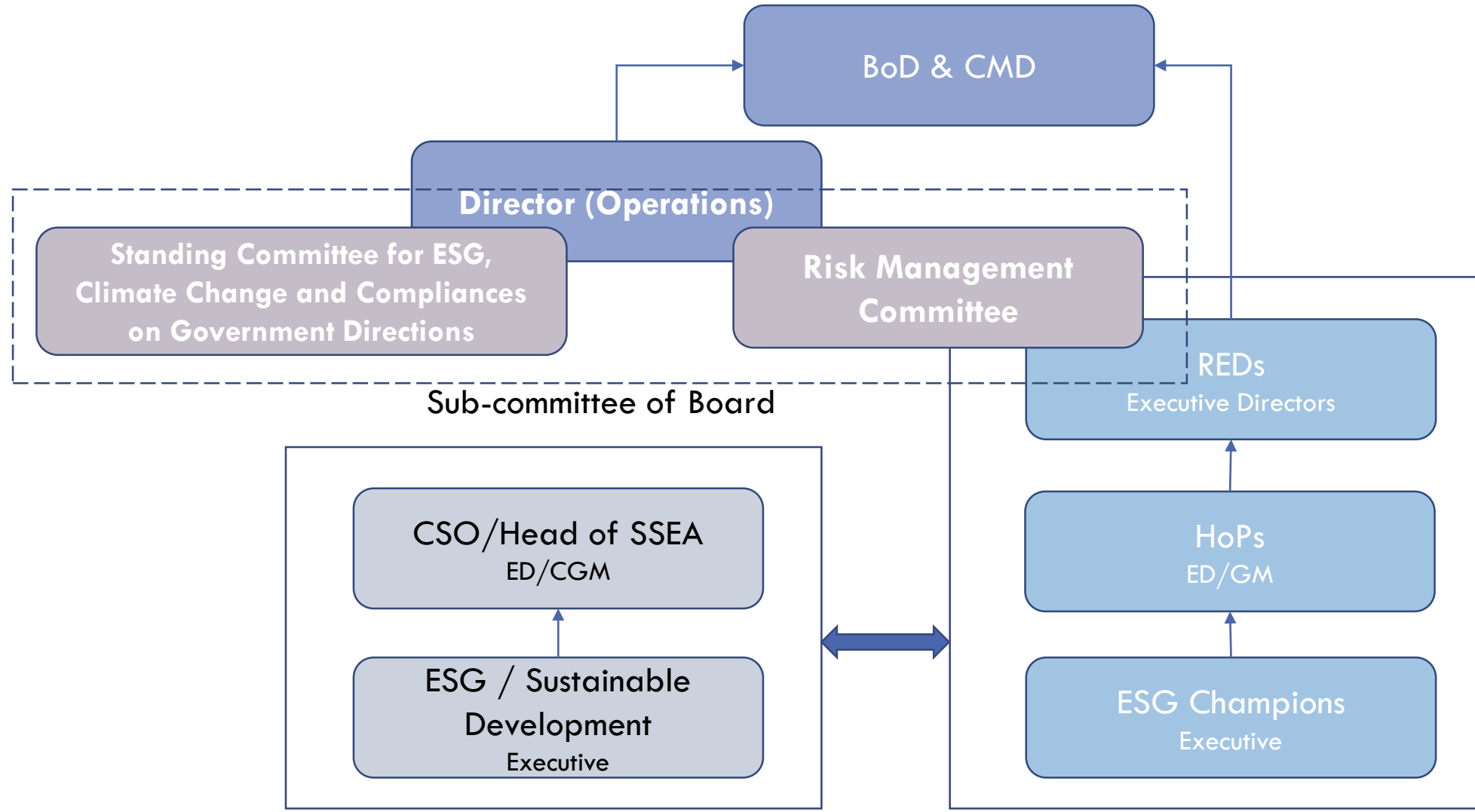
ESG Disclosure



News in Focus



ESG Gov. Structure



ESG: Collaborations



NTPC Energy Compacts



- NTPC has become 1st energy company and among few organisations across globe to declare its Energy Compact goals as part of UN High-level Dialogue on Energy (HLDE).
- NTPC energy commitments have been made public on UN's website.
- Major targets are:
 - ❑ To achieve 60 GW of cumulative capacity of renewables by 2032.
 - ❑ To reduce group net energy intensity by 10 % vs. 2012 levels by 2032.

Global Alliance for Sustainable Energy



- 17 Global energy players including Enel, Iberdrola
- To foster and promote sustainability along the entire renewable energy value chain
- Create metrics / KPIs / standards for design, business models, and end of life solutions
- Disseminate and activate funding/collaboration frameworks
- Policy advocacy
- Launch tailored initiatives and studies around Water usage, Human rights, Net Zero

NTPC Net Zero Plan



NITI Aayog

- Development of Net Zero GHG emissions Roadmap for NTPC in alignment to GoI's 'Panchamrit' goals
- Emissions and energy (portfolio mix) modelling including development of scenarios for 2030, 2037, 2047 and 2070
- Assistance in establishment of Carbon Management Unit (CMU) in NTPC with the aim of integrating all GHG reduction initiatives under one umbrella

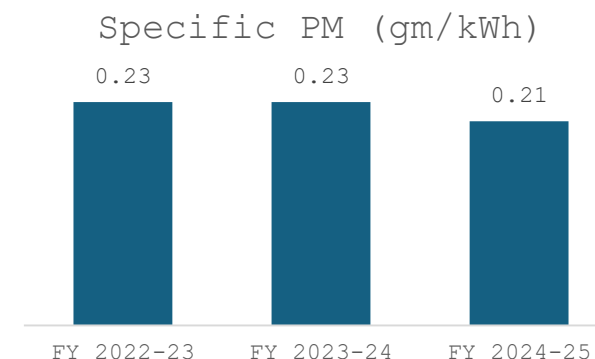
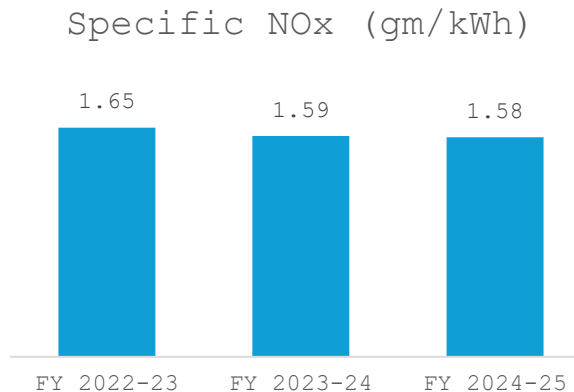
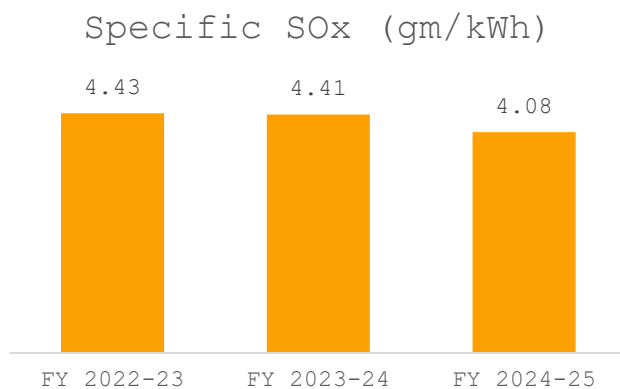


Environment Performance



2

Reducing Non-GHG Emissions



SO₂ Reduction :

- FGD awarded for ~64 GW
- COD done for 18 GW
- FGD under various stage of Erection and Commissioning in rest of capacities

NO_x Reduction :

- Combustion Modification completed in all 21.56 MW

SPM Reduction :

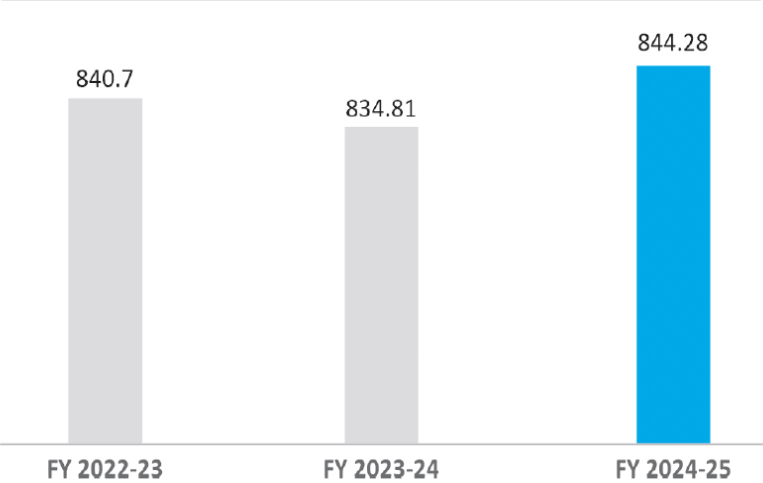
- ESP R&M completed
- Additional reduction being achieved through FGD installations



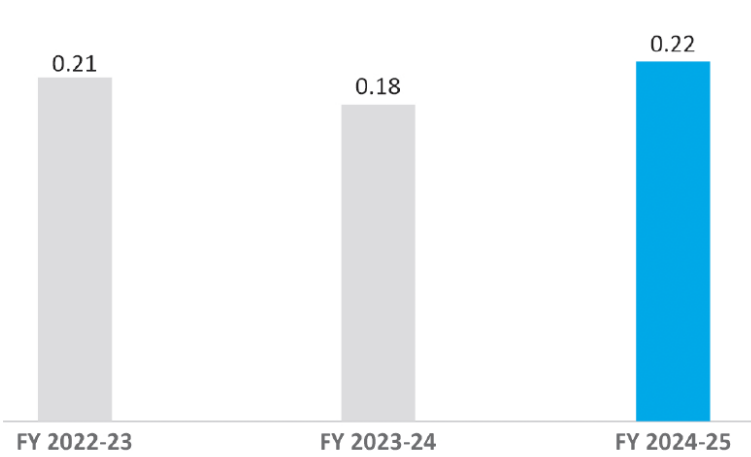
NTPC GHG Emission Profile



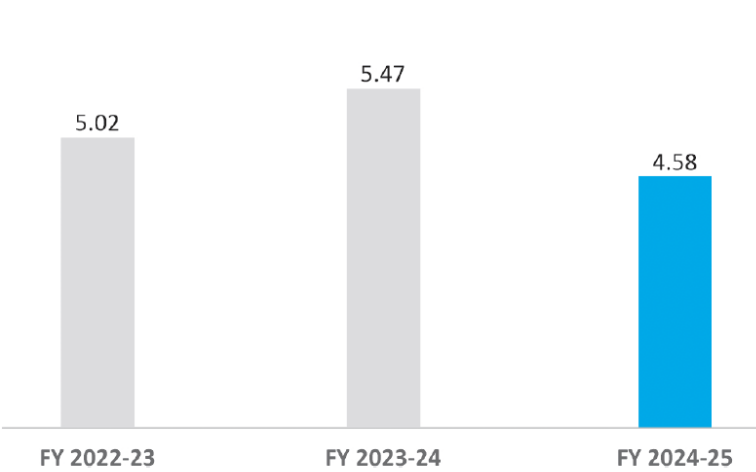
Sp. GHG Emission Scope 1 (gm/kWh)



Sp. GHG Emission Scope 2 (gm/kWh)



Sp. GHG Emission Scope 3 (gm/kWh)



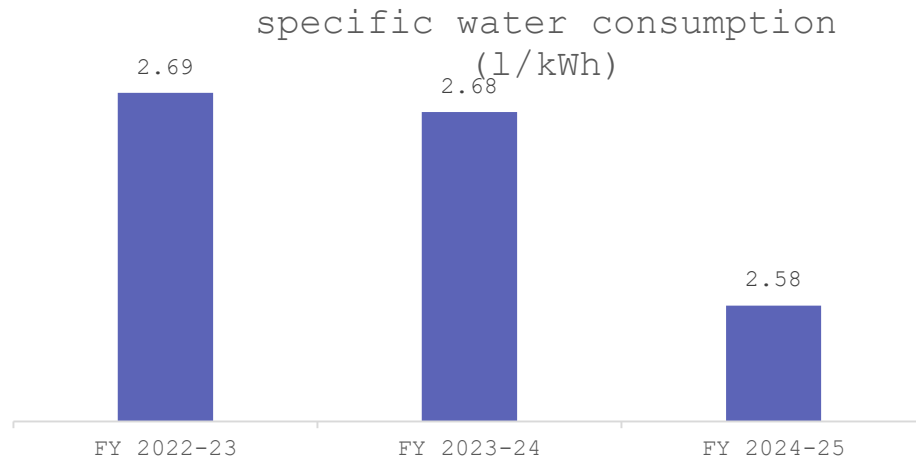
Type of Emission	FY 2021-22	FY 2022-23	FY 2023-24	FY 2024-25
Total direct emissions (Scope 1) (mil teq)	303.40	335.70	352.47	370.37
Total indirect emissions (Scope 2) (Tonnes)	16,400.34	85,743.45*	74,800.51	97,954.6
Total indirect emissions (Scope 3) (Tonnes)	11,13,879.89	20,03,010**	23,11,255	20,09,837

*Inclusion of Grid electricity consumption by plants during reserve shutdown

** Inclusion of ash transportation emission



Water Conservation



- NTPC is a signatory of CEO water mandate since 23.03.2021.
- NTPC has taken a policy decision to adopt ACC system in all upcoming plants except where technically not feasible. This saves around 60% of water.



Air Cooled- Condenser at North- Karanpura



R&D
Efforts



Air Cooled
Condenser
(AAC)



Treatment
& Reuse of
Sewage
Treated Water



Liquid Waste
Treatment
Plant (LWTP)



Ash Water
Recirculation
System
(AWRS)



Rainwater
Harvesting



Zero Liquid
Discharge



Increasing
Cycles of
Concentration

Conservation Activities across NTPC units:

- Mapping of Biodiversity Interfaces including Assessment of biodiversity risks and opportunities.
- Preparation and Implementation of Biodiversity Conservation/ Management Plan for Protected Areas/ Areas of High Bio-Diversity Values including issues related to Man Animal conflicts (if applicable);
- Enrichment of greenbelt for Biodiversity.
- Enhancing Awareness and Capacity Building on biodiversity.
- (Workshops & Training Programmes, Internal & External Seminars, Leaflets, Pamphlets, Posters, Video Clips, Quizzes and competitions, Campaigns and Awards etc.).
- Considering the impacts of business decisions on biodiversity and inclusion of the applicable biodiversity aspects in the environment management systems.
- Setting objectives and targets for biodiversity management.
- Implementation of Monitoring and Reporting System.
- Engaging in policy advocacy and dialogue with local communities, organizations, regulatory agencies and research institutes of national/ international repute, government, NGOs and academia.
- Designating individuals within the organization as biodiversity champion.
- Participation in International and National Conferences/Workshops/ Seminars/ Symposium on Biodiversity.
- Conservation & Management.

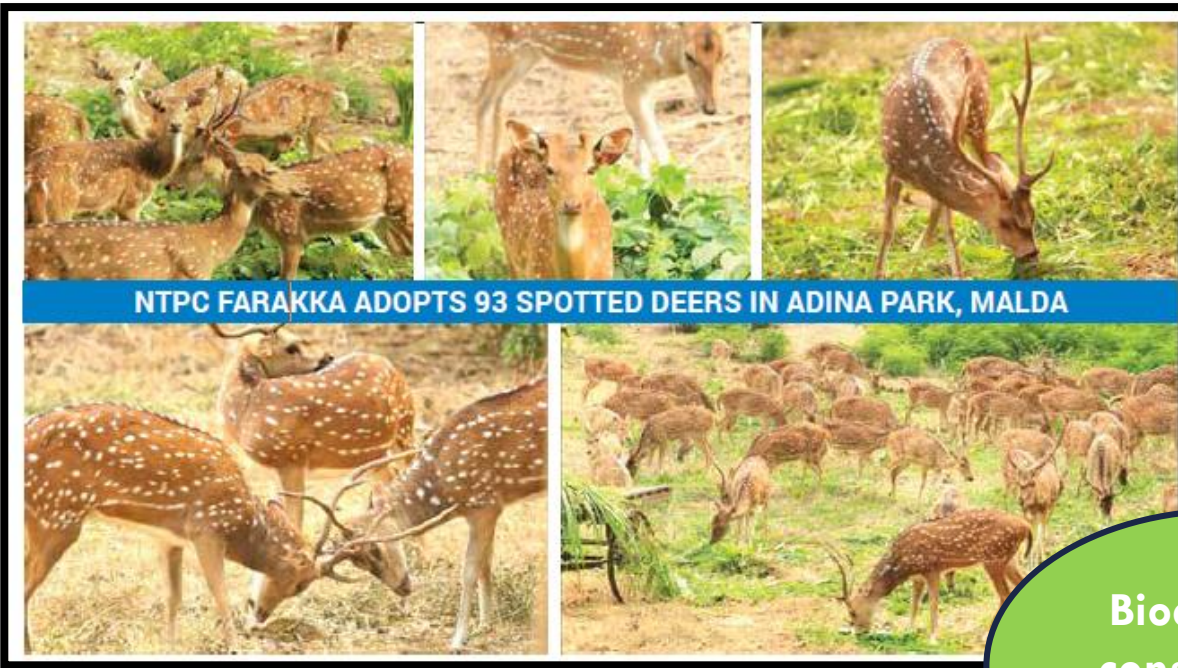
Biodiversity Conservation Initiatives

River ranching programme at NTPC Farakka(Fish conservation in Ganga river)



Biodiversity
conservation
initiatives

NTPC FARAKKA ADOPTS 93 SPOTTED DEERS IN ADINA PARK, MALDA



24 ha Mangrooves afforestation in NTECL land





Conservation of Olive Ridley Sea Turtles by NTPC Simhadri



Initiatives for Habitat Protection & Restoration

Wildlife conservation and monitoring plan for the protection of Great Indian Bustard (GIB) at Maldhok Sanctuary Solapur, Maharashtra.
Wildlife Conservation Plan for Lara STPP for Conservation of Sloth Bear for MGR Rail Corridor (35.413ha) from Otarliya to NTPC Lara.
Studies on Dolphin Biodiversity monitoring in Vikramshila Gangetic Dolphin Sanctuary for preparation of conservation plan
The Wildlife Conservation Plan for the conservation of Black Buck at Meja STPP has been prepared in consultation with the UP-State Forest Department and implemented.
Conservation of Olive Ridley Sea Turtles along the coast of Andhra Pradesh in collaboration with Andhra Pradesh Forest Department is being done.
Wildlife Conservation Plan for Dulanga Coal Mine Project, Sundargargh, Odisha, is being implemented with Odisha State Forest Department.
Mapping of Biodiversity Interfaces, Including Assessment & Inventorisation of Biodiversity at Vindhayachal Super Thermal Power Station, is completed.

Species	IUCN Category	Location	
Great Indian Bustard (<i>Ardeotis nigriceps</i>)	Critically Endangered	Solapur	
Sloth Bear (<i>Melursus ursinus</i>)	Vulnerable	Raigarh	
Gangetic Dolphin (<i>Platanista gangetica</i>)	Endangered	Kahalgaon	
Black Buck(<i>Antelope cervicapra</i>)	Least concern	Meja	
Olive Ridley turtle(<i>Lepidochelya olivacea</i>)	Vulnerable	Simhadri	

Wastewater Management Facilities



ETP Facility



Neutralization Pit at DM Plant



Sewage Treatment Plant



CSSP



Waste Management in NTPC Premises



Vermi-Compost



Integrated Waste Storage Facility



Biogas Plant



Social Performance



5

Human Resource Development

Organizational
Restructuring

Job Rotation

Career
Development

MANAS

New Promotion
and Transfer
Policy

Weekly Planner

Fixed Tenure
Employment

ETs 1st Posting
in Operation

Compulsory
Health Checkup

Learning and
Development

Induction of All
Female ET
Batch

CPV
Assessment

- Unified Shared Services – HR, Finance and Purchase
- Experts in each O&M area
- Faceless HR and Finance

Learning and Development:

- Structured ET Training
- Mandatory training on Ethics, Governance and Preventive vigilance
- Mid Career Planned interventions
- Samarth (Job rotation facilitation training)
- Targeted Competency development programmes
- Simulator/e-simulator trainings

Competency Development:

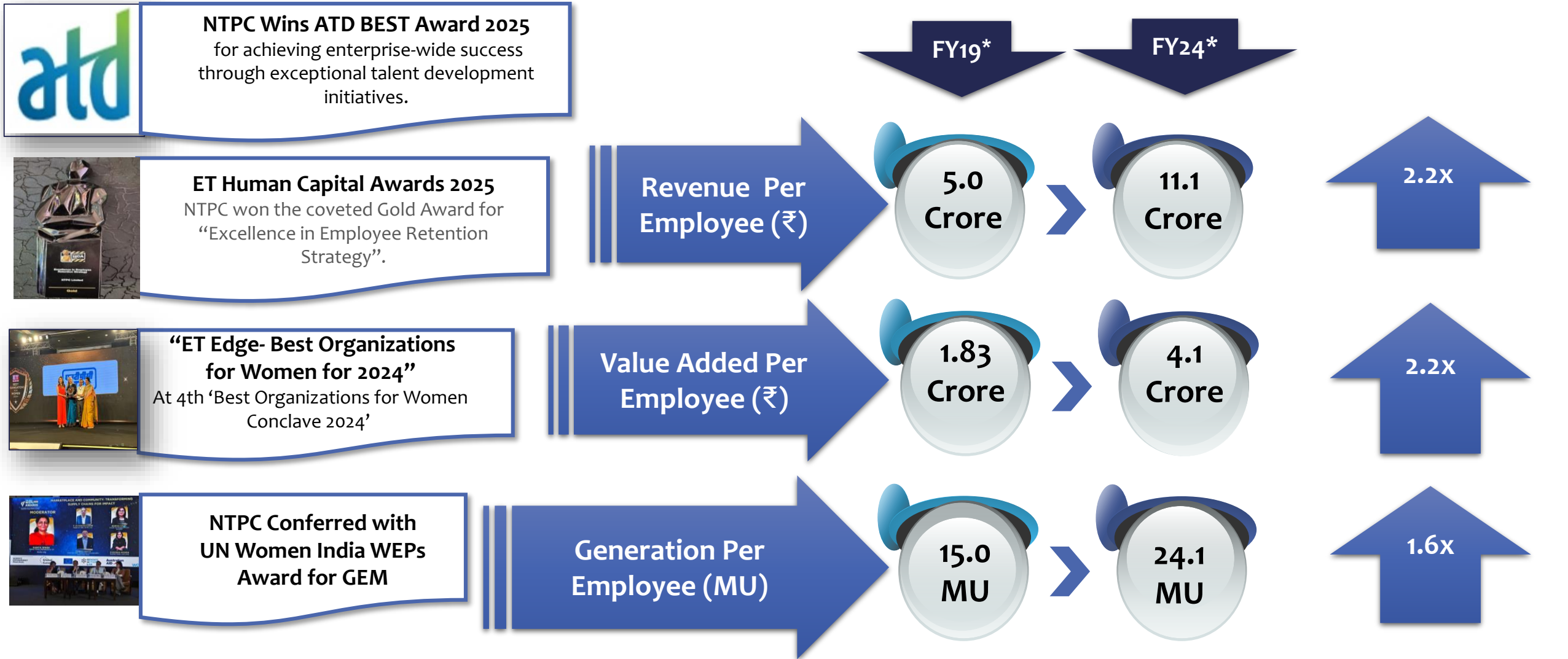
- Promoting meritocracy with weightage of field exposure
- Job rotation/ Agility and mobility
- Objective Competency, Potential and Values (CPV) assessment

Digital Initiatives in HR:

- MANAS
- Self booking paperless travel | Travel card | Local travel-Ola
- IPD through biometric | Tele medicine/ e-consultation
- CLIMS
- Online land records | Quarter allotment | Health profiling



Continuously Improving Productivity



Community Engagement



National Cancer Institute, Nagpur



Para-archer Sheetal Devi



Burn unit at AIIMS Bhubaneshwar



GEM Program at NTPC



Developing Archery Sport pan India



Women Empowerment

Highlights

GEM : ~ 10,000 girl children have been benefited so far.

Archery: Commitment for developing Archery pan India at grassroots level. Resulting in achieving more than 255 International Medals for Indian archers.

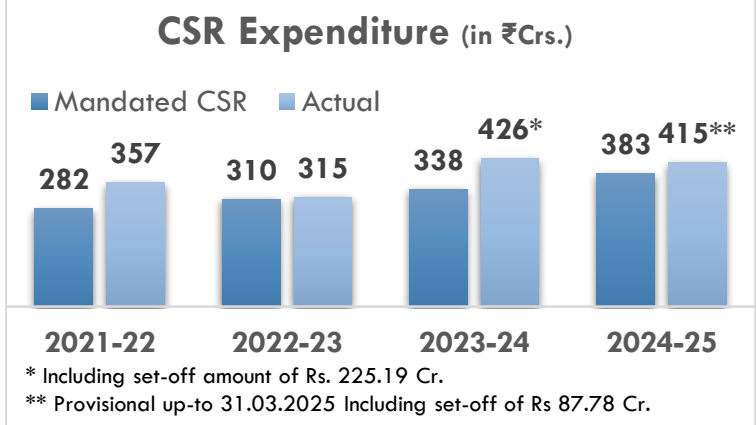
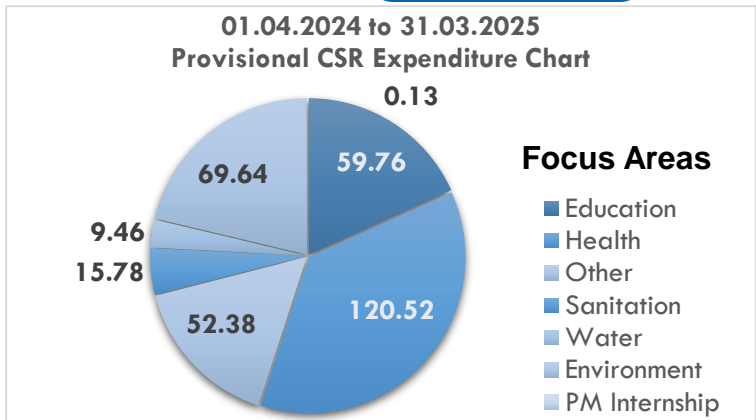
NTPC has adopted 18 ITIs and setting up 8 new ones.

Extending CSR reach with initiatives in North-East region and bordering areas.

Supported for construction, equipment and diagnostic labs at National Cancer Institute Nagpur, Maharashtra.



Green World Award in the CSR Category, Brazil – 25th March 2025



Mobile Health Care Service by NTPC

Tools: Implementation

FOCUS ON LEAD INDICATORS

- Pep Talks/TBT Capturing Deviations
- Reporting Near Misses
- Daily Random PTW Checking Cross-Functional Teams (CFT)

REINFORCING OWNERSHIP

- KOM: SURAKSHA MITRA
- HOD & HOP enhanced involvement
- Routine & Surprise site visit by HODs/ROs
- swearing-In Ceremony/ Incident Recall
- Zone Leader- Role clarity

STRENGTHENING OF PROCESSES & SYSTEMS

- SURAKSHA App SAP Integrated Safety Framework OD/OGNs/LMIs
- Safety Dashboards
- HOP Review as per standard Format
- PMS- Safety KPAs
- Accident Examination & Recommendation Compliance System (AERCS)

CAPABILITY DEVELOPMENT

- Employee Training
- Auditor development programme
- Job specific training module (Contractor's Workers) SURAKSHAVALI ISO 45001 Certification

AUDITS, VISITS & PROMOTIONS

- External Safety Audit through reputed agencies
- Internal Audits surprise Site Visits
- Theme based Safety Observance
- Short films /audio clips Safety Pledge & Policy-Acceptance

Safety Policy

- All accidents are preventable. Provide safe working environment and strive for zero incidents at work.
- Our activities carry various hazards; however, all such hazards can be identified
- Every job shall be done safely, no matter how important or urgent it is
- Putting people to work carries a specific responsibility & accountability
- Right procedure and actions can bring the risks under control
- Trained and committed team can ensure incident free operations.
- Compliance to applicable safety regulations & legal requirement.

Business Unit Head {BUH}:

- Implementing this policy through LMIs
- Ensuring identification and display of all hazards
- Establishing cross-functional team for internal audits.
- Making employees accountable for working safely

Head of Departments {HODs}:

- Identification, reporting & dealing hazards by EICs
- Cordoning of unsafe areas & reporting unsafe conditions by EICs
- Training of workers and awareness about the hazards
- Deployment of relevant safety equipment by the contractor
- Co-operation by all with management and observe rules and procedures.



Safety Policy of NTPC

(First Release: 07th Nov'16; Last Reviewed: 1st March 2022)

Applicable to all employees of NTPC and are required to comply.

Chairman and Managing Director is responsible to issue and review the Safety Policy periodically describing intent, responsibility and broad frame work.

A. Statement of Intent:

Safety is part of our core values; therefore, safety shall be at the forefront of all our activities.

We recognize all accidents are preventable.

The objective is to provide safe working environment and strive for zero incidents at work. This policy, supported by safety rules and procedures, is applicable for all business activities carried out by NTPC.

Safety policy is built around following principles:

1. Our activities carry various hazards; however, all such hazards can be identified.
2. Every job shall be done safely, no matter how important or urgent it is.
3. Putting people to work carries a specific responsibility and accountability for safety which shall be visibly demonstrated.
4. Right procedures and actions can bring the risks under control.
5. Trained and committed team can ensure incident free operations.
6. We shall comply with all applicable safety regulations and other legal requirements. We shall strive to improve and make it better than the minimum standard(s).

B. Organization's Responsibility:

We have a three tier approach to make work place incident-free:

1. Top Management responsibility:

a. Directors and REDs are accountable for:

- i. Ensuring that all work activities under their control are carried out in adherence with this policy;
- ii. Ensuring that Heads of Projects / Stations are individually accountable for implementation of this policy and ensuring they have the necessary skills in safety management;
- iii. Setting appropriate standards for safety in their work area;
- iv. Putting Safety as a part of appraisal system, both for self and their teams;
- v. Ensuring that safety audit is conducted periodically through third party at all sites

2. Head of the Project/Stations are accountable for:

- a. Implementing this policy by introduction of local management systems with high standards of safety;
- b. Ensuring identification and display of all hazards;
- c. Establishing rotating cross-functional team for internal audits.
- d. Making employees accountable for working safely by creating a safer work environment and ensuring that their actions do not harm either themselves or





Migratory Birds at NTPC Dadri

Thank You



NTPC Ramagundam

Website: www.ntpc.co.in